

# 2024 Product Catalog

Smart connected Optech products to build a intelligent world.



High Quality  
Prompt Response  
Professional Service

**optech**  
optimize your networking

# We Optech

Optech is a leading company in developing and manufacturing Optical Transceivers and DAC, AOC cables solutions for Data Center and Telecom, AIoT industry.

Since 2001, Optech has been offering accurate lead time and high-quality products to customers.

Optech offers a broad range of networking and communication solutions in following categories: Optical Transceivers, 155MB~1.25G SFP, 10G SFP+, 25G SFP28, 32G SFP, 40G QSFP+, 50G SFP56 and 50G QSFP56, 64G SFP, 100G QSFP28, 200G QSFP56 and 200G QSFP-DD, 400G QSFP-DD and 400G OSFP, 800G QSFP-DD and 800G OSFP. Direct Attach Cables (DAC), Active Optical Cables (AOC), Ethernet Media Converter, Fiber Optical Patch Cord, BWDM, CWDM and DWDM Mux/Demux and 100G Repeater products.

Our products are 100% compatible with Cisco series, HP ARUBA, HP BLADESYSTEM, H3C, HPE, EDGECORE, Extreme, Juniper, Arista, Alcatel, Nokia, Nvidia/Mellanox, Intel, Ericsson, Fortinet, F5, GIGAMON, Brocade, Moxa, Huawei, Asus, D-Link, ZyXEL, and many other major networking brands on the market. We also have strict quality control and inspection procedures.

We can do OEM service by using your own brand name, we have been working with major brands as OEM service for past years. If you are looking for a second source for your products, we are happy to provide you with our competitive price to support as well.

Our products have sold to many worldwide Telecom and Datacom, AI companies, and countries such as USA, UK, Canada, France, Italy, Czech, Norway, Germany, Spain, China, Hong Kong, Singapore, Korea, Japan, Australian, South Africa, Israel, Brazil, Colombia, Guatemala, Panamá and many more.

With years of experience in the fiber optic industry, our factory is fully equipped over 5,000 square meters. All of our manufacture Optical products and Direct Attach Cables are RoHS compliant and Optech also achieved UL and TUV Rheinland, CE, CB requirements, obtained ISO9001, ISO14001 certifications.

Optech products have been deployed in over 40 countries around the world, and we invented and patented technologies that continue to help network team gain better understanding of user activity, application performance, threat vulnerabilities, and network events simultaneously, while protecting investment of monitoring tools and lowering the overall cost of proactively monitoring your network.



A night-time city skyline with illuminated skyscrapers. Overlaid on the scene are several white, glowing arcs representing 5G network coverage. In the foreground, there are vibrant, blurred light trails in shades of orange, red, and blue, suggesting high-speed data flow or traffic. The text '5G' is prominently displayed in the upper left quadrant.

**5G**

**Telecom**  
**Enterprise**  
**Datacenter**

# CONTENTS

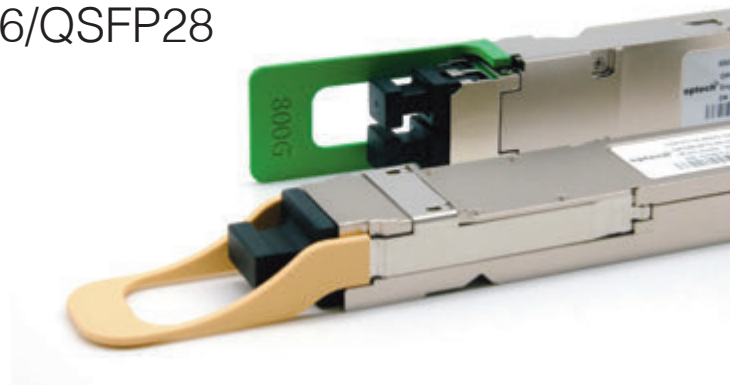
## Index

---

### Transceiver

---

<b>1</b>	800G	QSFP-DD/OSFP/OSFP-Flat
<b>2</b>	400G	QSFP-DD/OSFP/QSFP112
<b>3</b>	Coherent	400G QSFP-DD/100G CFP2
<b>4</b>	200G	QSFP56/QSFP-DD
<b>5</b>	100G	QSFP28
<b>6</b>	100G	QSFP28 Bidi/Single lambda
<b>7</b>	50G	SFP56/QSFP56/QSFP28
<b>8</b>	40G	QSFP+
<b>9</b>	25G	SFP28
<b>10</b>	10G	SFP+
<b>11</b>	10G	XFP
<b>12</b>	1.25G	SFP
<b>13</b>	1.25G	SFP xWDM
<b>14</b>	622/155M	SFP FE OC-12/OC-3





## DAC

---

- 15 Direct Attach Cable
- 16 DAC Fanout Cable

## AOC

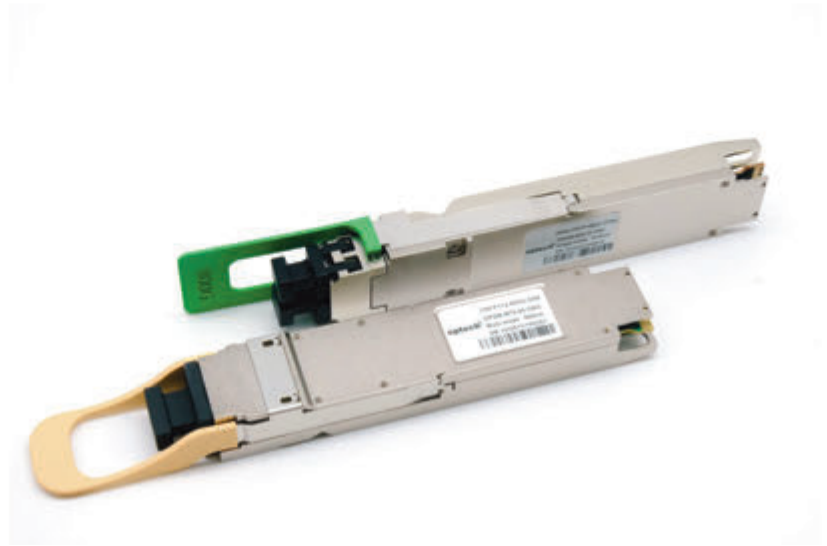
---

- 17 Active Optical Cable  
AOC Fanout Cable

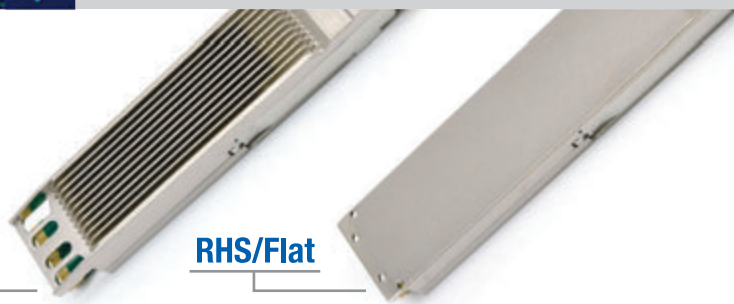


# 800G

## QSFP-DD/OSFP/OSFP112/OSFP-Flat



Optech P/N	Model No.	Media Type	Connector	Wavelength (nm)	Reach	Transmitter	Receiver	MAX Power Consumption
<b>QSFP-DD</b>								
OPDM-SX5-13-CBS	800G QSFP-DD DR8	SMF	MPO-16	1310	500m	EML/Sipho	PIN	18.5W
OPDM-S02-13-CBS	800G QSFP-DD DR8+	SMF	MPO-16	1310	2km	EML/Sipho	PIN	18.5W
OPDM-S02-13-CB2	800G QSFP-DD 2xFR4	SMF	Dual CS/LC	CWDM4	2km	EML/Sipho	PIN	16W
<b>OSFP</b>								
OPOM-SX5-13-CBS	800G OSFP DR8	SMF	MPO-16	1310	500m	EML/Sipho	PIN	18.5W
OPOM-S02-13-CBS	800G OSFP DR8+	SMF	MPO-16	1310	2km	EML/Sipho	PIN	16W
OPOM-S02-13-CB2	800G OSFP 2xFR4	SMF	Dual LC	CWDM4	2km	EML/Sipho	PIN	16W
<b>OSFP112</b>								
OPQM-MT5-85-CBO	800G OSFP 2xSR4	MMF	Dual MPO-12	850	50m	850nm VCSEL	PIN	14W
OPQM-SX5-13-CBO	800G OSFP 2xDR4	SMF	Dual MPO-12	1310	500m	EML/Sipho	PIN	14W
OPQM-S02-13-CBO	800G OSFP 2xDR4+	SMF	Dual MPO-12	1310	2km	EML/Sipho	PIN	16W
<b>OSFP-Flat Top</b>								
OPOM-MT5-85-CBN	800G OSFP FLT 2xSR4	MMF	Dual MPO-12	850	50m	850nm VCSEL	PIN	14W
OPOM-SX5-13-CBN	800G OSFP FLT 2xDR4	SMF	Dual MPO-12	1310	500m	EML/Sipho	PIN	18.5W



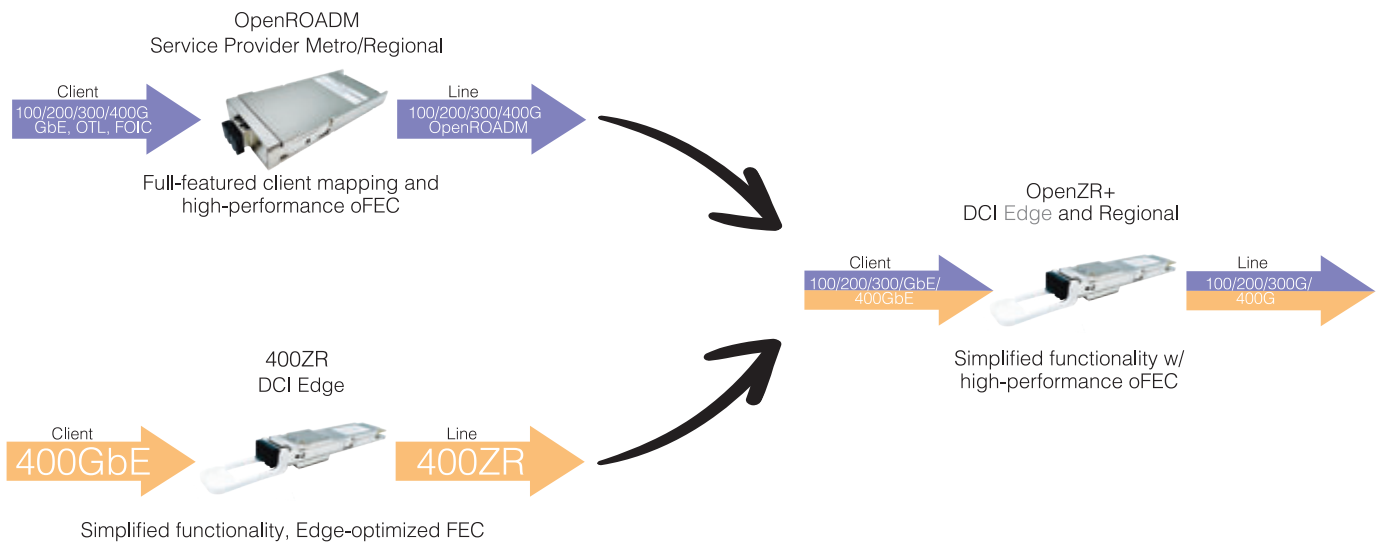
# 400G

## QSFP-DD/OSFP/QSFP112

Optech P/N	Model No.:	Media Type	Connector	Wavelength (nm)	Reach	Transmitter	Receiver	MAX Power Consumption
<b>QSFP-DD</b>								
OPDY-MX1-85-CB4	400G-QSFP-DD-SR4	MMF	MPO-12	850	100m	VCSEL	PIN	11W
OPDY-MX1-85-CB8	400G-QSFP-DD-SR8	MMF	MPO-16	850	100m	VCSEL	PIN	11W
OPDY-WX1-85-CB	400G-QSFP-DD SR4.2 BD	MMF	MPO-12	850	100m	VCSEL	PIN	11W
OPDY-SX5-13-CB	400G-QSFP-DD-DR4	SMF	MPO-12	1310	500m	EML / Siph	PIN	9W
OPDY-S02-13-CBS	400G-QSFP-DD XDR4 (DR4+)	SMF	MPO-12	1310	2km	EML / Siph	PIN	9W
OPDY-S02-13-CB	400G-QSFP-DD-FR4	SMF	Duplex LC	CWDM4	2km	EML CWDM4	PIN	10.5W
OPDY-S02-13-CF8	400G-QSFP-DD-FR8 (PSM8)	SMF	CS	1310	2km	EML LWDM8	PIN	12.5W
OPDY-S10-13-CBS	400G QDD-4X100G-LR	SMF	MPO-12	1310	10km	1310nm EML/Siph	PIN	10W
OPDY-S10-13-CBE	400G-QSFP-DD-eCWDM4 (LR4)	SMF	Duplex LC	1310	10km	1310nm EML/Siph	PIN	11W
OPDY-S10-13-CFS	400G-QSFP-DD-LR8 (PSM8)	SMF	MPO16/MPO24	1310	10km	EML LWDM	PIN	10W
OPDY-S30-13-CB	400G-QSFP-DD-ER4-LITE	SMF	Duplex LC	1295.56/ 1300.05/ 1304.58/1309.14nm	30km	EML LWDM4	APD	12W
<b>OSFP</b>								
OPOY-MT5-85-CB	400G OSFP VR4(SR4)	MMF	MPO-12	850nm	50M	850nm VCSEL	PIN	9W
OPOY-SX5-13-CB	400G OSFP DR4	SMF	MPO-12	1310nm	500M	1310nm EML	PIN	9W
OPOY-S02-13-CBS	400G OSFP DR4+ (XDR4)	SMF	MPO-12	1310nm	2km	1310nm EML	PIN	9W
OPOY-C02-yy-CB4	400G OSFP 2xFR4	SMF	Dual Duplex LC	CWDM4	2km	Siph CWDM4	PIN	11W
<b>QSFP112</b>								
OPCY-MX1-85-CBT	400G QSFP112 SR4	MMF	MPO-12	850nm	50m	850nm VCSEL	PIN	9W
OPCY-SX5-13-CBT	400G QSFP112 DR4	SMF	MPO-12	1310nm	500m	1310nm Siph	PIN	10W
OPCY-S02-13-CBT	400G QSFP112 FR4	SMF	Dual Duplex LC	CWDM4	2km	Siph CWDM4	PIN	10W

# Coherent

## 400G QSFP-DD/100G CFP2



Optech P/N	Model No.:	Type	Media Type	Connector	Wavelength	Reach	Transmitter	Receiver	MAX Power Consumption
<b>QSFP-DD</b>									
OP-QDD-400G-ZR-L	400G QSFP-DD ZR Lite	400G DP-16QAM	SMF	Duplex LC	DWDM	<80km	C band	TBA	17W
OP-QDD-400G-ZR	400G QSFP-DD ZR	400G DP-16QAM	SMF	Duplex LC	DWDM	80km	C band	TBA	21W
OP-QDD-400G-ZR+	400G QSFP-DD OpenZR+	400G DP-16QAMoFEC	SMF	Duplex LC	DWDM	480km	C band 75GHz	TBA	21W
OP-QDD-400G-ZR+-HP	400G QSFP-DD OpenZR+ High TXPower	400G DP-16QAMoFEC	SMF	Duplex LC	DWDM	2000km	C band 75GHz	TBA	21W
OPGR-Dxx-A0-CB	400G/200G/100G CFP2 C-Band DWDM Tunable	400G DP-16QAM/300G DP-8QAM 200G DP-QPSK/100G DP-QPSK	SMF	Duplex LC	DWDM	1000km	C band 50GHz	TBA	24W
OPGY-Dxx-A0-CB	400G CFP2 C-Band DWDM Tunable	400G DP-16QAM/300G DP-8QAM 200G DP-QPSK/100G DP-QPSK	SMF	Duplex LC	DWDM	1000km	C band 50GHz	TBA	24W
OPDW-S80-13-CB	100G QSFP-DD ZR	QSFP-DD	SMF	Duplex LC	1310	80km	EML	SOA APD	8.5W
OPDW-SCO-13-CB	100G QSFP-DD Open ZR+	QSFP-DD	SMF	Duplex LC	1310	120 ~420km	EML	SOA APD	8.5W





# 200G QSFP56/QSFP-DD

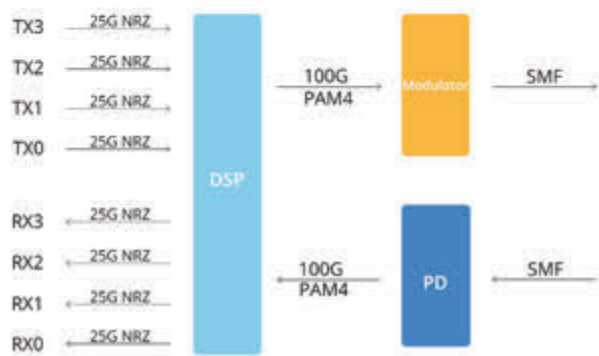
Optech P/N	Model No.	Media Type	Connector	Wavelength(nm)	Reach	Transmitter	Receiver	MAX Power Consumption
<b>QSFP56</b>								
OPBV-MX1-85-CB	200G QSFP56 SR4	MMF	MPO	850	100m	VCSEL	PIN	5.5W
OPBV-SX5-13-CF	200G QSFP56 DR4	SMF	Duplex LC	1310	500m	DFB	PIN	8.5W
OPBV-S02-13-CF	200G QSFP-56 FR4	SMF	Duplex LC	1310	2km	DFB	PIN	8.5W
OPBV-S10-13-CF	200G QSFP56 LR4	SMF	Duplex LC	1310	10km	DFB	PIN	8.5W
OPBV-S40-13-CF	200G QSFP56 ER4	SMF	Duplex LC	1310	40km	EML LWDM4	APD	8.5W
<b>QSFP-DD</b>								
OPDV-MX1-85-CF	200G QSFP-DD SR8	MMF	MPO-24	850	100m	VCSEL	PIN	4W
OPDV-S02-13-CFS	200G QSFP-DD PSM8 2km	SMF	MPO-16	1310	2km	DFB	PIN	6.5W
OPDV-S10-13-CFS	200G QSFP-DD PSM8 10km	SMF	MPO-16	1310	10km	DFB	PIN	6.5W
OPDV-S10-13-CF8	200G QSFP-DD LR8	SMF	MPO-16	1310	10km	DFB	PIN	6.5W
OPDV-S10-13-CB4	200G QSFP-DD LR4	SMF	Duplex LC	LWDM	10km	DFB	PIN	8.5W
OPDV-S40-13-CB	200G QSFP-DD ER4	SMF	Duplex LC	LWDM	40km	EML LWDM	AvPD	12W





# 100G QSFP28

Optech P/N	Model No	Media Type	Connector	Wavelength (nm)	Reach	Transmitter	Receiver	MAX Power Consumption
<b>QSFP28</b>								
OPCW-MX1-85-CB	QSFP28-100G-SR4	MMF	MPO	850	100m	VCSEL	PIN	2.5W
OPCW-AX1-85-CF	QSFP28-100G-SWDM4	MMF	Duplex LC	850	100m	VCSEL	PIN	4W
OPCW-MX3-85-CF	QSFP28-100G-XSR4	MMF	Duplex LC	850	300m	VCSEL	PIN	2W
OPCW-W02-13-CB	QSFP28-100G-BWDM-CWDM4	SMF	Duplex LC	1331	2km	DFB	PIN	3.5W
OPCW-S02-13-CF	QSFP28-100G-LR4-Lite	SMF	Duplex LC	1310	2km	DFB	PIN	4.5W
OPCW-S02-13-CFS	QSFP28-100G-IR4-PSM4	SMF	MPO	1310	2km	DFB	PIN	3.5W
OPCW-S10-13-CBD	QSFP28-100G-LR4 (DFB)	SMF	Duplex LC	1310	10km	DFB	PIN	3.5W
OPCW-S10-13-CR	QSFP28-100G-LR4	SMF	Duplex LC	1310	10km	EML	PIN	4.5W
OPCW-S10-13-CBE	QSFP28-100G-eCWDM4	SMF	Duplex LC	1331	10km	DFB	PIN	4.5W
OPCW-S10-13-CFS	QSFP28-100G-LR4-PSM4	SMF	MPO	1310	10km	DFB	PIN	4.5W
OPCW-S30-13-CB	QSFP28-100G-ER4-Lite	SMF	Duplex LC	1310	30km	EML	APD	4.5W
OPCW-S40-13-CF	QSFP28-100G-ER4	SMF	Duplex LC	1310	40km	EML	APD	4.5W
OPCW-S80-13-CR	QSFP28-100G-ZR4	SMF	Duplex LC	1310	80km	EML	SOA APD	8.5W
OPCW-S10-13-CFT	QSFP28-100G-LR4 (DUAL RATE)	SMF	Duplex LC	1310	10km	DFB	PIN	4W
OPCW-S30-13-CFT	QSFP28-100G-ER4-Lite (DUAL RATE)	SMF	Duplex LC	1310	30km	EML	APD	4.5W
OPCW-WX1-85-C	QSFP-40/100-SR BD	MMF	Duplex LC	850	100m	VCSEL	PIN	2.5W
OPCVR-QSFP28-SFP25G	CONVERTER MODULE	X	Duplex LC	X	X	X	X	X



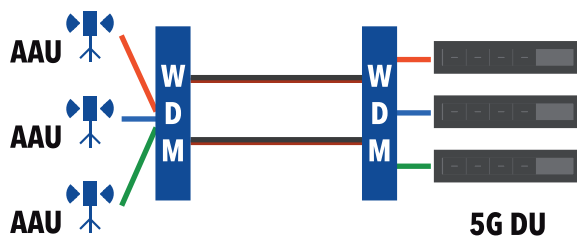
# 100G

## QSFP28 Bidi/Single lambda

Optech P/N	Model No.	Media Type	Connector	Wavelength (nm)	Reach	Transmitter	Receiver	MAX Power Consumption
<b>QSFP28</b>								
OPCW-WX1-85-CB	QSFP28-100G-SR1.2 BIDI	MMF	Duplex LC	850	100m	VCSEL	PIN	2.5W
OPCW-W02-13-CB	QSFP28-100G-BWDM-CWDM4	SMF	Duplex LC	1310	2km	DFB	PIN	3.5W
OPCW-W10-13-CB1	QSFP28-100G-LR1-BWDM	SMF	Duplex LC	1331	10km	DFB	PIN	4.5W
OPCW-W10-27-CA	QSFP28-100G-BIDI 10km	SMF	Simplex LC	TX1271/RX1331	10km	DFB	PIN	3.5W
OPCW-W10-33-CA	QSFP28-100G-BIDI 10km	SMF	Simplex LC	TX1331/RX1271	10km	DFB	PIN	3.5W
OPCW-W20-29-CA	QSFP28-100G-BIDI 20km	SMF	Simplex LC	TX1291/RX1311	20km	DFB	PIN	3.5W
OPCW-W20-31-CA	QSFP28-100G-BIDI 20km	SMF	Simplex LC	TX1311/RX1291	20km	DFB	PIN	3.5W
OPCW-W30-A4-CA	QSFP28-100G-BIDI 30km	SMF	Simplex LC	TX1304/RX1309	30km	EML DFB	APD	3.5W
OPCW-W30-A9-CA	QSFP28-100G-BIDI 30km	SMF	Simplex LC	TX1309/RX1304	30km	EML DFB	APD	3.5W
OPCW-W40-A4-CA	QSFP28-100G-BIDI 40km	SMF	Simplex LC	TX1304/RX1309	40km	EML DFB	APD	3.5W
OPCW-W40-A9-CA	QSFP28-100G-BIDI 40km	SMF	Simplex LC	TX1309/RX1304	40km	EML DFB	APD	3.5W
OPCW-WX1-85-CT	QSFP-40/100-SR BIDI	MMF	Duplex LC	850	100m	VCSEL	PIN	2.5W
OPCW-SX5-13-CB1	QSFP28-100G-DR1	SMF	Duplex LC	1310	500m	DFB	PIN	4.5W
OPCW-S02-13-CB4	QSFP28-100G-DR1+	SMF	Duplex LC	1310	2km	DFB	PIN	4.5W
OPCW-S02-13-CB1	QSFP28-100G-FR1	SMF	Duplex LC	1310	2km	DFB	PIN	4.5W
OPCW-S10-13-CB1	QSFP28-100G-LR1	SMF	Duplex LC	1310	10km	DFB	PIN	4.5W

# 50G

## SFP56/QSFP56/QSFP28



**5G Fronthaul**  
**One Fiber One Site**  
**Solutions**

Optech P/N	Model No.	Product Description	Media Type	Connector	Wavelength	Reach	Transmitter	Receiver	MAX Power Consumption
<b>SFP56</b>									
OPAU-MX1-85-CF	SFP56 SR	50GE SFP56 SR	MMF	Duplex LC	850nm	100m	VCSEL	PIN	3.5W
OPAU-S10-13-CF	SFP56 LR	50GE SFP56 LR	SMF	Duplex LC	1310nm	10km	DFB	PIN	3.5W
OPAU-S40-13-CF	SFP56 ER	50GE SFP56 ER	SMF	Duplex LC	1310nm	40km	DFB	APD	4W
OPAU-W10-27-CF	SFP56 LR BIDI	SFP56 LR, 1270/1330nm	SMF	Duplex LC	1270/1330nm	10km	DFB	PIN	3.5W
OPAU-W10-33-CF	SFP56 LR BIDI	SFP56 LR, 1330/1270nm	SMF	Duplex LC	1330/1270nm	10km	DFB	PIN	3.5W
OPAU-C10-yy-CF	SFP56 LR CWDM	50GE SFP56 LR, CWDM	SMF	Duplex LC	1330nm	10km	DFB	PIN	3.5W
<b>QSFP56</b>									
OPCU-MX1-85-CF	QSFP56	QSFP-56G-SR4 4*14G, NRZ	MMF	Duplex LC	850nm	150M	VCSEL	PIN	3.5W
<b>QSFP28</b>									
OPCP-S10-13-Cx	50G LR Duplex	50GE SFP56 LR	SMF	Duplex LC	1310nm	10km	DFB	PIN	4.5W
OPCP-S40-13-Cx	50G ER Duplex	50GE SFP56 ER	SMF	Duplex LC	1310nm	40km	EML	APD	4.5W
OPCP-W10-27-Cx	50G LR BIDI	QSFP28 LR, 1270/1330nm	SMF	Duplex LC	1270/1330	10km	DFB	PIN	4.5W
OPCP-W10-33-Cx	50G LR BIDI	QSFP28 LR, 1330/1270nm	SMF	Duplex LC	1330/1270	10km	DFB	PIN	4.5W
OPCP-W40-xx-Cx	50G ER BIDI	QSFP28 ER, 1270/1330nm	SMF	Duplex LC	1295/1305	40km	EML	APD	4.5W
OPCP-W40-xx-Cx	50G ER BIDI	QSFP28 ER, 1330/1270nm	SMF	Duplex LC	1305/1295	40km	EML	APD	4.5W

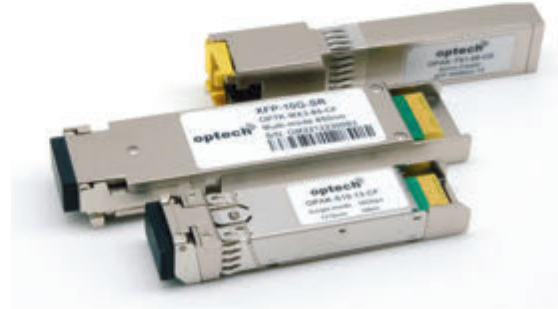
# 40G QSFP+

Optech P/N	Model No.	Media Type	Connector	Wavelength	Reach	Transmitter	Receiver	MAX Power Consumption
<b>QSFP+</b>								
OPCS-MX1-85-CF	QSFP-40G-SR4	MMF	MPO	850nm	100m	VCSEL	PIN	1.5W
OPCS-MX3-85-CF	QSFP-40G-ESR4/CSR4	MMF	MPO	850nm	400m	VCSEL	PIN	1.5W
OPCS-WX1-85-CY	QSFP-40G-BWDM-SR4	MMF	MTP/MPO	850nm	150m	VCSEL	PIN	1.5W
OPCS-X02-13-CF	QSFP-40G-LX4	MMF	Duplex LC	1310nm	150m	DFB	PIN	3.5W
OPCS-AX1-85-CY	QSFP-40G-SWDM4	MMF	Duplex LC	100nm	100m	VCSEL	PIN	3.5W
OPCS-S01-13-CFS	QSFP-40G-IR4 (PSM)	SMF	MPO	1310nm	1.4km	DFB	PIN	3.5W
OPCS-S02-13-CF	QSFP-40G-IR4	SMF	MPO	1310nm	2km	DFB	PIN	3.5W
OPCS-S10-13-CF	QSFP-40G-LR4	SMF	Duplex LC	1310nm	10km	DFB	PIN	3.45W
OPCS-S10-13-CFS	QSFP-40G-4X10GE-IR (PSM)	SMF	MPO	1310nm	10km	DFB	PIN	3.5W
OPCS-S40-13-CF	QSFP-40G-ER4	SMF	Duplex LC	1310nm	40km	DFB	APD	4W
OPCS-S80-13-CF	QSFP-40G-ZR4	SMF	Duplex LC	1310nm	80km	DFB	APD	4.5W
OPCVR-QSFP-SFP10G	CONVERTER MODULE	QSFP+/SFP+	Duplex LC	X	X	X	X	X





# 25G SFP28



Optech P/N	Model No.	Media Type	Connector	Wavelength (nm)	Reach	Transmitter	Receiver	MAX Power Consumption
<b>SFP28</b>								
OPAX-MX1-85-CF	SFP28-25G-SR	MMF	Duplex LC	850	70m-100m	VCSEL	PIN	1W
OPAX-MX3-85-CF	SFP28-25G-CSR	MMF	Duplex LC	850	300m	VCSEL	PIN	1W
OPAX-S10-13-CF	SFP28-25G-LR	SMF	Duplex LC	1310	10km	DFB	PIN	1.5W
OPAX-W10-27-CF	SFP28-25G-BWDM-10-xx	SMF	Simplex LC	1270/1330	10km	DFB	PIN	1.5W
OPAX-W10-33-CF	SFP28-25G-BWDM-10-xx	SMF	Simplex LC	1330/1270	10km	DFB	PIN	1.5W
OPAX-W20-27-CF	SFP28-25G-BWDM-20-xx	SMF	Simplex LC	1270/1330	20km	DFB	PIN	1.5W
OPAX-W20-33-CF	SFP28-25G-BWDM-20-xx	SMF	Simplex LC	1330/1270	20km	DFB	PIN	1.5W
OPAX-W40-27-CY	SFP28-25G-BWDM-40-xx	SMF	Simplex LC	1270/1310	40km	EML	APD	2W
OPAX-W40-31-CY	SFP28-25G-BWDM-40-xx	SMF	Simplex LC	1310/1270	40km	EML	APD	2W
OPAX-C14-yy-CF	SFP-25G-CWDM-14-yy	SMF	Duplex LC	1270-1370	10km	DFB	PIN	1.5W
OPAX-C14-yy-CF	SFP-25G-CWDM-14-yy	SMF	Duplex LC	1410-1430	10km	DFB	PIN	1.5W
OPAX-C14-yy-CF	SFP-25G-CWDM-14-yy	SMF	Duplex LC	1470-1570	10km	DFB	PIN	1.5W
OPAX-D10-xx-CF	SFP-25G-DWDM-10-xx	SMF	Duplex LC	1563.05~1528.77	10km	EML	PIN	2.5W
OPAX-D10-xx-CR	SFP-25G-DWDM-10-xx Tunnable	SMF	Duplex LC	Tunable	10km	EML	PIN	2.5W
OPAX-D15-xx-CR	SFP-25G-DWDM-15-xx Tunnable	SMF	Duplex LC	Tunable	15km	EML	PIN	2.5W
OPAX-S40-13-CF	SFP28-25G-ER	SMF	Duplex LC	1310	40km	EML	APD	2W
OPAX-S80-13-CC	SFP28-25G-ZR	SMF	Duplex LC	1300	80km	EML	APD	2.5W
OPAX-MX1-85-CFT	SFP28 10/25G SR (dual rate)	MMF	Duplex LC	850	100m	VCSEL	PIN	1W
OPAX-MX3-85-CFT	SFP28 10/25G CSR (dual rate)	MMF	Duplex LC	850	300m	VCSEL	PIN	1W
OPAX-S10-13-CFT	SFP28 10/25G LR (dual rate)	SMF	Duplex LC	1310	10km	DFB	PIN	1.5W
OPAX-S40-13-CFT	SFP28-10/25G-ER (dual rate)	SMF	Duplex LC	1310	40km	EML	APD	2W



# 10G SFP+

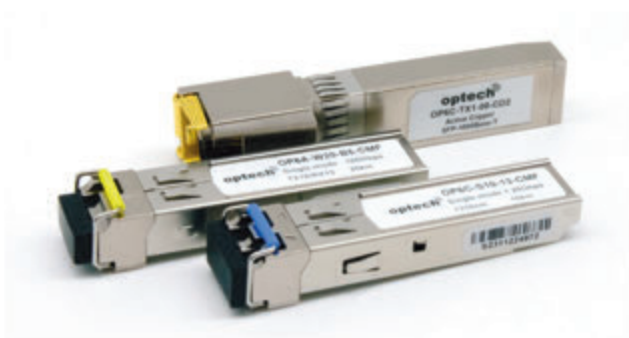
Optech P/N	Model No.	Media Type	Connector	Wavelength (nm)	Reach	Transmitter	Receiver	MAX Power Consumption
<b>SFP+</b>								
OPAK-MX3-85-CF	SFP+10G-SR	MMF	Duplex LC	850	300m	VCSEL	PIN	1W
OPAK-MX2-13-CF	SFP+10G-LRM	MMF	Duplex LC	1310	220m	DFB	PIN	1W
OPAK-S02-13-CF	SFP+10G-LR-Lite	SMF	Duplex LC	1310	2km	FP	PIN	1W
OPAK-S10-13-CF	SFP+10G-LR	SMF	Duplex LC	1310	10km	DFB	PIN	1W
OPAK-S40-13-CF	SFP+10G-ELR	SMF	Duplex LC	1310	40km	DFB	APD	1.5W
OPAK-S40-15-CF	SFP+10G-ER	SMF	Duplex LC	1550	40km	EML	PIN	1.5W
OPAK-S80-15-CF	SFP+10G-ZR	SMF	Duplex LC	1550	80km	EML	APD	2W
OPAT-MX3-85-CF	SFP+1G/10G-SR	MMF	Duplex LC	850	300m	VCSEL	PIN	1W
OPAT-S10-13-CF	SFP+1G/10G-LR	SMF	Duplex LC	1310	10km	DFB	PIN	1W
OPAT-S40-13-CF	SFP+1G/10G-ELR	SMF	Duplex LC	1310	40km	DFB	APD	1.5W
OPAT-S40-15-CF	SFP+1G/10G-ER	SMF	Duplex LC	1550	40km	EML	PIN	1.5W
OPAT-S80-13-CF	SFP+1G/10G-ZR	SMF	Duplex LC	1550	80km	EML	APD	2W
OPAK-TX1-00-CDx	SFP+10G-TX	Copper	RJ45	X	30/80/100m	Cat 6a/7	Cat 6a/7	2.5W
OPAT-TX1-00-CD1	SFP+10G-TX (Multi RATE)	Copper	RJ45	X	30~100m	Cat 6a/7	Cat 6a/7	2.5W
<b>SFP+ BWDM</b>								
OPAK-Wxx-27-CF	SFP+BWDM-xx-27	SMF	Simplex LC	TX1270/RX1330	10~60km	DFB	PIN	1.5W
OPAK-Wxx-33-CF	SFP+BWDM-xx-33	SMF	Simplex LC	TX1330/RX1270	10~60km	DFB	PIN	1.5W
OPAK-W80-49-CF	SFP+BWDM-80-49	SMF	Simplex LC	TX1490/RX1550	80km	EML	APD	2.5W
OPAK-W80-55-CF	SFP+BWDM-80-55	SMF	Simplex LC	TX1550/RX1490	80km	EML	APD	2.5W
<b>SFP+ CWDM</b>								
OPAK-C14-yy-CF	SFP+CWDM-14-yy	SMF	Duplex LC	1270-1410	20km	DFB	PIN	1.5W
OPAK-C16-yy-CF	SFP+CWDM-16-yy	SMF	Duplex LC	1470~1610	40km	CWDM EML	PIN	1.5W
OPAK-C20-yy-CF	SFP+CWDM-20-yy	SMF	Duplex LC	1270~1330	40km	DFB	APD	1.5W
OPAK-C24-yy-CF	SFP+CWDM-24-yy	SMF	Duplex LC	1591~1611	70km	CWDM EML	APD	2W
OPAK-C24-yy-CF	SFP+CWDM-24-yy	SMF	Duplex LC	1471~1571	80km	CWDM EML	APD	2W
OPAK-C25-yy-CF	SFP+CWDM-25-yy	SMF	Duplex LC	1470~1550	100km	CWDM EML	APD	2W
<b>SFP+ DWDM</b>								
OPAK-D80-00-CF	SFP+DWDM-80	SMF	Duplex LC	Tunable	80km	EML	APD	2W
OPAK-D40-xx-CF	SFP+DWDM-40-xx	SMF	Duplex LC	1563.86~1540.56	40km	EML	PIN	2W
OPAK-D80-xx-CF	SFP+DWDM-80-xx	SMF	Duplex LC	1563.86~1540.56	80km	EML	APD	2W

# 10G

## XFP

Optech P/N	Model No.	Media Type	Connector	Wavelength (nm)	Reach	Transmitter	Receiver	MAX Power Consumption
<b>XFP</b>								
OP7K-MX3-85-CF	XFP-10G-SR	MMF	Duplex LC	850	300m	VCSEL	PIN	1.5W
OP7K-S10-13-CF	XFP-10G-LR	SMF	Duplex LC	1310	10km	DFB	PIN	2W
OP7K-S40-15-CF	XFP-10G-ER	SMF	Duplex LC	1550	40km	EML	PIN	2.5W
OP7K-S80-15-CF	XFP-10G-ZR	SMF	Duplex LC	1550	80km	EML	APD	2.5W
<b>XFP BWDM</b>								
OP7K-W20-27-CF	XFP-BWDM-xx-27	SMF	Simplex LC	TX1270/RX1330	20km	DFB	PIN	2W
OP7K-W20-33-CF	XFP-BWDM-xx-33	SMF	Simplex LC	TX1330/RX1270	20km	DFB	PIN	2W
OP7K-W40-27-CF	XFP-BWDM-40-27	SMF	Simplex LC	TX1270/RX1330	40km	DFB	PIN	2W
OP7K-W40-33-CF	XFP-BWDM-40-33	SMF	Simplex LC	TX1330/RX1270	40km	DFB	PIN	2W
OP7K-W60-27-CF	XFP-BWDM-60-27	SMF	Simplex LC	TX1270/RX1330	60km	DFB	APD	2W
OP7K-W60-33-CF	XFP-BWDM-60-33	SMF	Simplex LC	TX1330/RX1270	60km	DFB	APD	2W
OP7K-W80-49-CF	XFP-BWDM-80-49	SMF	Simplex LC	TX1490/RX1550	80km	EML	APD	2W
OP7K-W80-55-CF	XFP-BWDM-80-55	SMF	Simplex LC	TX1550/RX1490	80km	EML	APD	2W
<b>XFP CWDM</b>								
OP7K-C10-yy-CF	XFP CWDM-10-yy	SMF	Duplex LC	1270-1410	10km	DFB	PIN	2W
OP7K-C14-yy-CF	XFP CWDM-14-yy	SMF	Duplex LC	1270~1330	40km	DFB	APD	2W
OP7K-C24-yy-CF	XFP CWDM-24-yy	SMF	Duplex LC	1470~1610	80km	EML	APD	2W
<b>XFP DWDM</b>								
OP7K-D80-00-CQ	XFP-DWDM-80	SMF	Duplex LC	Tunable	80km	EML	APD	2.5W
OP7K-D40-xx-CF	XFP-DWDM-40-xx	SMF	Duplex LC	1529.55~1560.61	40km	EML	PIN	2.5W
OP7K-D80-xx-CF	XFP-DWDM-80-xx	SMF	Duplex LC	1529.55~1560.61	80km	EML	APD	2.5W





# 1.25G SFP

Optech P/N	Model No.	Media Type	Connector	Wavelength (nm)	Reach	Transmitter	Receiver	MAX Power Consumption
<b>SFP 1.25Gbps</b>								
OP6C-MX5-85-CMF	SFP-SX	MMF	Duplex LC	850	550m	VCSEL	PIN	1W
OP6C-M02-13-CMF	SFP-MLX	MMF	Duplex LC	1310	2km	FP	PIN	1W
OP6C-S10-13-CMF	SFP-LX	SMF	Duplex LC	1310	10km	FP	PIN	1W
OP6C-S20-13-CMF	SFP-LX 20	SMF	Duplex LC	1310	20km	FP	PIN	1W
OP6C-S40-13-CMF	SFP-ELX	SMF	Duplex LC	1310	40km	DFB	PIN	1W
OP6C-S40-15-CMF	SFP-EX	SMF	Duplex LC	1550	40km	DFB	PIN	1W
OP6C-S50-15-CMF	SFP-XD	SMF	Duplex LC	1550	50km	DFB	PIN	1W
OP6C-S70-15-CMF	SFP-ZX	SMF	Duplex LC	1550	70km	DFB	PIN	1W
OP6C-S80-15-CMF	SFP-ZX+	SMF	Duplex LC	1550	80km	DFB	PIN	1W
OP6C-S90-15-CMF	SFP-EZX	SMF	Duplex LC	1550	90km	DFB	PIN	1W
OP6C-SA0-15-CMF	SFP-EZX+	SMF	Duplex LC	1550	100km	DFB	APD	1W
OP6C-SB0-15-CMF	SFP-UZX	SMF	Duplex LC	1550	110km	DFB	APD	1W
OP6C-SC0-15-CMF	SFP-UZX+	SMF	Duplex LC	1550	120km	DFB	APD	1W
OP6C-TX1-00-CD1	SFP-TX	Copper	RJ-45	X	100m	NA	NA	1W
OP6C-TX1-00-CD2	SFP-TX	Copper	RJ-45	X	100m	NA	NA	1W
OP6T-TX1-00-CS	SGMII SUPPORT	Copper	RJ-45	X	100m	NA	NA	1W



# 1.25G

## BWDM/CWDM/DWDM

Optech P/N	Model No.	Media Type	Connector	Wavelength (nm)	Reach	Transmitter	Receiver	MAX Power Consumption
<b>SFP BWDM</b>								
OP6C-Wxx-B3-CMF	SFP-BWDM-10-31	SMF	Simplex LC	TX1310/RX1550	10~60km	FP	PIN	1W
OP6C-Wxx-B5-CMF	SFP-BWDM-10-55	SMF	Simplex LC	TX1550/RX1310	10~60km	DFB	PIN	1W
OP6C-Wxx-B4-CMF	SFP-BWDM-10-31	SMF	Simplex LC	TX1310/RX1550	10~60km	FP	PIN	1W
OP6C-Wxx-B9-CMF	SFP-BWDM-10-49	SMF	Simplex LC	TX1490/RX1310	10~60km	DFB	PIN	1W
OP6C-W80-49-CMF	SFP-BWDM-80-49	SMF	Simplex LC	TX1490/RX1550	80km	DFB	PIN	1W
OP6C-W80-55-CMF	SFP-BWDM-80-55	SMF	Simplex LC	TX1550/RX1490	80km	DFB	PIN	1W
OP6C-WC0-49-CMD	SFP-BWDM-120-49	SMF	Simplex LC	TX1490/RX1550	120km	DFB	APD	1W
OP6C-WC0-55-CMD	SFP-BWDM-120-55	SMF	Simplex LC	TX1550/RX1490	120km	DFB	APD	1W
<b>SFP CWDM</b>								
OP6C-C14-yy-CMF	SFP-CWDM-14-yy	SMF	Duplex LC	1270 ~ 1610	20KM	CWDM DFB	PIN	1W
OP6C-C16-yy-CMF	SFP-CWDM-16-yy	SMF	Duplex LC	1270 ~ 1610	30KM	CWDM DFB	PIN	1W
OP6C-C20-yy-CMF	SFP-CWDM-20-yy	SMF	Duplex LC	1270 ~ 1610	40KM	CWDM DFB	PIN	1W
OP6C-C24-yy-CMF	SFP-CWDM-24-yy	SMF	Duplex LC	1270 ~ 1610	60KM	CWDM DFB	PIN	1W
OP6C-C26-yy-CMF	SFP-CWDM-26-yy	SMF	Duplex LC	1270 ~ 1610	80KM	CWDM DFB	PIN	1W
OP6C-C30-yy-CMF	SFP-CWDM-30-yy	SMF	Duplex LC	1470 ~ 1610	100KM	CWDM DFB	APD	1W
OP6C-C31-yy-CMF	SFP-CWDM-31-yy	SMF	Duplex LC	1470 ~ 1610	120KM	CWDM DFB	APD	1W
<b>SFP DWDM</b>								
OP6C-D80-xx-CMD	SFP-DWDM-80-xx	SMF	Duplex LC	1528.77~1563.05	80km	DML	APD	1W

# 622M 155M SFP FE OC-12/OC-3

Optech P/N	Model No.	Media Type	Connector	Wavelength (nm)	Reach	Transmitter	Receiver	MAX Power Consumption
<b>SFP 622 Mbps</b>								
OP6B-S15-13-CMF	SFP-622-15	SMF	Duplex LC	1310nm	15km	FP	PIN	1W
OP6B-S20-13-CMF	SFP-622-20	SMF	Duplex LC	1310nm	20km	FP	PIN	1W
OP6B-S40-13-CMF	SFP-622-40	SMF	Duplex LC	1310nm	40km	DFB	PIN	1W
OP6B-S80-13-CMF	SFP-622-80	SMF	Duplex LC	1310nm	80km	APD	PIN	1W
OP6B-SC0-13-CMF	SFP-622-120	SMF	Duplex LC	1310nm	120km	APD	PIN	1W
<b>SFP 155 Mbps</b>								
OP6M-M02-13-CMD	SFP-100DUAL-MM-DM-SGMII GLC-GE-100FX=	MMF	Duplex LC	1310	2km	FP	PIN	1.5W
OP6A-M02-85-CMF	SFP-155-850-02	MMF	Duplex LC	850	2km	VCSEL	PIN	1W
OP6A-M02-13-CMF	SFP-155-1310-02	MMF	Duplex LC	1310	2km	FP	PIN	1W
OP6A-S20-13-CMF	SFP-155-20	SMF	Duplex LC	1310	20km	FP	PIN	1W
OP6A-S30-13-CMF	SFP-155-30	SMF	Duplex LC	1310	30km	FP	PIN	1W
OP6A-S40-13-CMF	SFP-155-40	SMF	Duplex LC	1310	40km	FP	PIN	1W
OP6A-S80-15-CMF	SFP-155-80	SMF	Duplex LC	1550	80km	DFB	PIN	1W
OP6A-S90-15-CMF	SFP-155-90	SMF	Duplex LC	1550	90km	DFB	PIN	1W
OP6A-SA0-15-CMF	SFP-155-100	SMF	Duplex LC	1550	100km	DFB	PIN	1W
OP6A-SB0-15-CMF	SFP-155-110	SMF	Duplex LC	1550	110km	DFB	PIN	1W
OP6A-SC0-15-CMF	SFP-155-120	SMF	Duplex LC	1550	120km	DFB	PIN	1W
OP6A-TX1-00-CF	SFP-100-TX	Copper	RJ-45	X	100m	NA	NA	1W
OP6A-TX1-00-IF	SFP-100-TX-I	Copper	RJ-45	X	100m	NA	NA	1W
<b>SFP BIDI 155 Mbps</b>								
OP6A-Wxx-B3-CMF	SFP-155-BWDMxx-31	SMF	Duplex LC	TX1310/RX1550	20~60km	FP	PIN	1W
OP6A-Wxx-B5-CMF	SFP-155-BWDMxx-55	SMF	Duplex LC	TX1550/RX1310	20~60km	DFB	PIN	1W

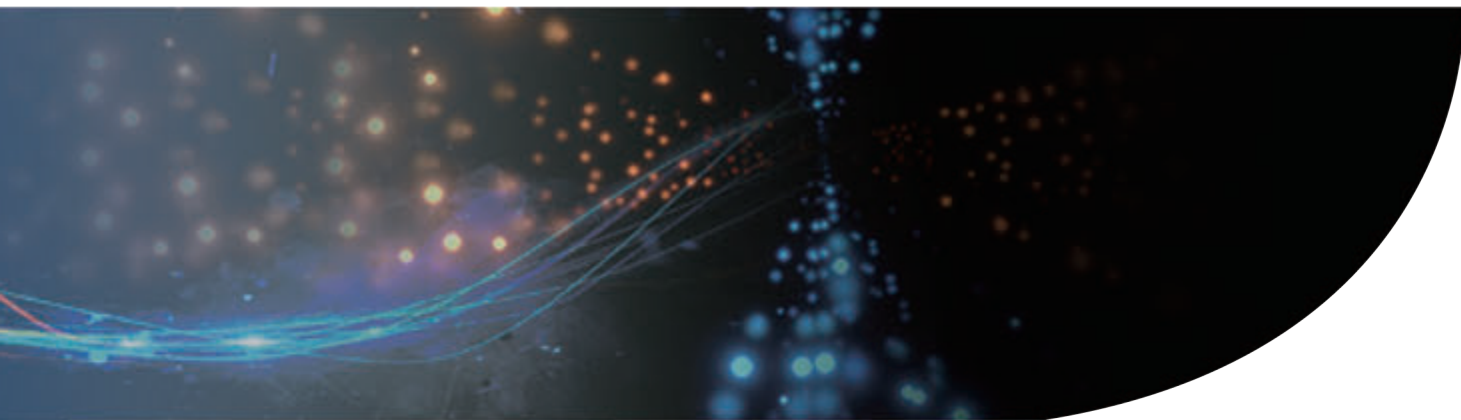
# DAC

## Direct attach cable



Optech P/N	Length	Type	AWG
<b>800Gbps OSFP Passive Cable</b>			
OPQSOH-T-X5-PEV	0.5M	Passive	30
OPQSOH-T-01-PCV	1M	Passive	28
OPQSOH-T-xx-PBV	1.5~2M	Passive	26
<b>800Gbps QSFP-DD Passive Cable</b>			
OPQSDH-T-X5-PEV	0.5M	Passive	30
OPQSDH-T-01-PCV	1M	Passive	28
OPQSDH-T-xx-PBV	1.5~2M	Passive	26
<b>800Gbps QSFP-DD to OSFP Passive Cable</b>			
OPOQSDH-T-01-PCV	1M	Passive	28
OPOQSDH-T-02-PBV	2M	Passive	26
<b>400Gbps OSFP Passive Cable</b>			
OPQSOD-T-xx-PEB	0.5~1M	Passive	30
OPQSOD-T-xx-PBB	2~2.5M	Passive	26
<b>400Gbps QSFP112 Passive Cable</b>			
OPQ112-T-xx-PEB	0.5~1M	Passive	30
OPQ112-T-xx-PBB	2~2.5M	Passive	26
<b>400Gbps QSFP-DD Passive Cable</b>			
OPQSDD-T-xx-PEB	0.5~1M	Passive	30
OPQSDD-T-xx-PBB	2~2.5M	Passive	26
<b>200Gbps QSFP-56 Passive Cable</b>			
OPQS56-T-xx-PEB	0.5~1M	Passive	30
OPQS56-T-xx-PBB	2~3M	Passive	26
<b>200Gbps QSFPDD Passive Cable</b>			
OPQSDD-T-xx-PEB	0.5~1M	Passive	30
OPQSDD-T-xx-PBB	2~3M	Passive	26

Optech P/N	Length	Type	AWG
<b>100Gbps QSFP28 Passive Cable</b>			
OPQS28-T-xx-PEB	0.5~3M	Passive	30
OPQS28-T-xx-PBB	3~5M	Passive	26
<b>50Gbps SFP56 Passive Cable</b>			
OPSF56-T-xx-PEB	1~1.5M	Passive	30
OPSF56-T-xx-PBB	2~2.5M	Passive	26
<b>40Gbps QSFP+ Passive Cable</b>			
OPQSFP-T-xx-PEB	0.5~3M	Passive	30
OPQSFP-T-05-PCB	5M	Passive	28
OPQSFP-T-05-PBB	5M	Passive	26
OPQSFP-T-07-PAB	7M	Passive	24
<b>25Gbps SFP28 Passive Cable</b>			
OPSF28-T-xx-PEB	0.5~3M	Passive	30
OPSF28-T-05-PBB	5M	Passive	26
<b>10Gbps SFP+ Passive Cable</b>			
OPSFPP-T-xx-PEB	0.5~3M	Passive	30
OPSFPP-T-03-PBB	3M	Passive	26
OPSFPP-T-04-PEB	4M	Passive	30
OPSFPP-T-xx-PAB	3~10M	Passive	24



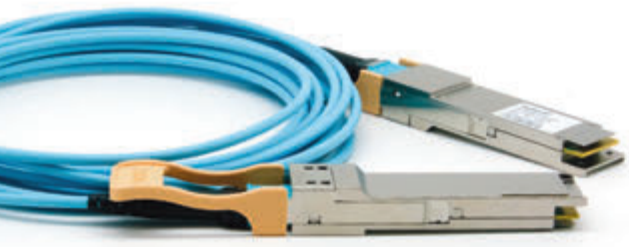
# DAC

## Fanout cable

Optech P/N	Length	Type	AWG
<b>800G OSFP to 4 x OSFP Fanout DAC</b>			
OPQSOH-T-xx-P/OSDH/4	0.5~1.5M	Passive	30
OPQSOH-T-02-P/OSDH/4	2M	Passive	26
<b>800G OSFP to 4 x QSFP112 Fanout DAC</b>			
OPOSDH-T-xx-P/Q112/4	0.5~1.5M	Passive	30
OPOSDH-T-02-P/Q112/4	2M	Passive	26
<b>800G OSFP to 2 x OSFP Fanout DAC</b>			
OPQSOH-T-xx-P/OSDH/2	0.5~1.5M	Passive	30
OPQSOH-T-02-P/OSDH/2	2M	Passive	26
<b>800G OSFP to 2 x QSFP112 Fanout DAC</b>			
OPQSOH-T-xx-P/Q112/2	0.5~1.5M	Passive	30
OPQSOH-T-02-P/Q112/2	2M	Passive	26
<b>800G QSFP-DD to 2 x QSFP112 Fanout DAC</b>			
OPQSDH-T-xx-P/Q112/2	0.5~1.5M	Passive	30
OPQSDH-T-02-P/Q112/2	2M	Passive	26
<b>400G QSFP-DD to 8 x 50G QSFP28 Fanout DAC</b>			
OPQSDD-T-xx-P/QS28/8	0.5~1.5M	Passive	30
OPQSDD-T-xx-P/QS28/8	2~2.5M	Passive	26
<b>400G QSFP-DD to 8 x 50G SFP56 Fanout DAC</b>			
OPQSDD-T-xx-P/SF56/8	0.5~1.5M	Passive	30
OPQSDD-T-xx-P/SF56/8	2~2.5M	Passive	26
<b>400G QSFP-DD to 4 x 100G QSFP28 Fanout DAC</b>			
OPQSDD-T-xx-P/QS28/4	0.5~1.5M	Passive	30
OPQSDD-T-xx-P/QS28/4	2~2.5M	Passive	26
<b>400G QSFP-DD to 4 x 100G QSP56 Fanout DAC</b>			
OPQSDD-T-xx-P/QS56/4	0.5~1.5M	Passive	30
OPQSDD-T-xx-P/QS56/4	2~2.5M	Passive	26
<b>400G QSFP-DD to 2 x 200G QSP56 Fanout DAC</b>			
OPQSDD-T-xx-P/QS56/2	0.5~1.5M	Passive	30
OPQSDD-T-xx-P/QS56/2	2M	Passive	26



Optech P/N	Length	Type	AWG
<b>200G QSFP56 to 2 x 100G QSFP56 Fanout DAC</b>			
OPQS56-T-xx-P/QS56/2	1~1.5M	Passive	30
OPQS56-T-xx-P/QS56/2	2~3M	Passive	26
<b>200G QSFP-DD to 8 x SFP28 Fanout DAC</b>			
OPQSDD-T-xx-P/SF28/8	1~3M	Passive	30
<b>200G QSFPDD to 2 x 100G QSFP28 Fanout DAC</b>			
OPQSDD-T-xx-P/QS28/2	1~2.5M	Passive	30
OPQSDD-T-xx-P/QS28/2	3M	Passive	26
<b>100G QSFP28 to 4 x 25G SFP28 Fanout DAC</b>			
OPQS28-T-xx-P/SF28/4	1~3M	Passive	30
OPQS28-T-xx-P/SF28/4	5M	Passive	26
<b>100G QSFP28 to 2 x 50G QSFP28 Fanout DAC</b>			
OPQS28-T-xx-P/QS28/2	1~2M	Passive	30
OPQS28-T-xx-P/QS28/2	3~5M	Passive	26
<b>40G QSFP to 4 x 10G SFP+ Fanout DAC</b>			
OPQSFP-T-xx-P/SFPP/4	1~3M	Passive	30
OPQSFP-T-xx-P/SFPP/4	5~10Mt	Passive	26



# AOC

## Active Optical Cable

Optech P/N	Model No.	Length	Type	Fiber Type
<b>800G OSFP Active Optical Cable</b>				
OPQSOH-F-xx-AKT	Active Optical Cable	1~100M	Active	OM3/OM4
<b>800G QSFP-DD Active Optical Cable</b>				
OPQSDH-F-xx-AKT	Active Optical Cable	1~100M	Active	OM3/OM4
<b>400G OSFP-RHS to 400G QSFP-DD AOC</b>				
OPQSDX-F-xx-AKT	Active Optical Cable	1~100M	Active	OM3/OM4
<b>400G QSFP-DD Active Optical Cable</b>				
OPQSDD-F-xx-AKT	Active Optical Cable	1~100M	Active	OM3/OM4
<b>200G QSFP-56 Active Optical Cable</b>				
OPQS56-F-xx-AKT	Active Optical Cable	1~100M	Active	OM3/OM4
<b>200G QSFP-DD Active Optical Cable</b>				
OPDD56-F-xx-AKT	Active Optical Cable	1~100M	Active	OM3/OM4
<b>100G QSFP28 Active Optical Cable</b>				
OPQS28-F-xx-AKF	Active Optical Cable	1~100M	Active	OM3/OM4
<b>50G SFP56 Active Optical Cable</b>				
OPSF56-F-xx-AKF	Active Optical Cable	1~100M	Active	OM3
<b>40G QSFP Active Optical Cable</b>				
OPQSFP-F-xx-AKB	Active Optical Cable	1~100M	Active	OM3
<b>25G SFP28 Active Optical Cables</b>				
OPSF28-F-xx-AKB	Active Optical Cable	1~100M	Active	OM3
<b>10G SFP Active Optical Cables</b>				
OPSFPP-F-xx-AKB	Active Optical Cables	1~100M	Active	OM3



# AOC Fanout Cable

Optech P/N	Model No.	Length	Type	Fiber Type
<b>400G QSFP-DD to 4x100G QSFP56 Fanout AOC</b>				
OPQSDD-F-xx-A/QS56/4	AOC Fanout Cables	1~100M	Active	OM3/OM4
<b>400G QSFP-DD to 2 x 200G QSP56 Fanout AOC</b>				
OPQSDD-F-xx-A/QS56/2	AOC Fanout Cables	1~100M	Active	OM3/OM4
<b>200G QSFP-56 to 2x100G QSFP56 Fanout AOC</b>				
OPQS56-F-xx-A/QS56/2	AOC Fanout Cables	1~100M	Active	OM3/OM4
<b>200G QSFP-DD to 2x100G QSFP28 Fanout AOC</b>				
OPDD56-F-xx-A/QS28/2	AOC Fanout Cables	1~100M	Active	OM3/OM4
<b>100G QSFP28 to 4 x 25Gbps SFP28 Fanout AOC</b>				
OPQS28-F-xx-A/SF28/4	AOC Fanout Cables	1~100M	Active	OM3/OM4
<b>40G QSFP+ to 4 x 10Gbps QSFP+ Fanout AOC</b>				
OPQSFP-F-xx-A/SFPP/4	AOC Fanout Cables	1~100M	Active	OM3/OM4



# Office/Branch

## Taiwan

Optech Technology Co., Ltd.  
5F, No. 56, Ln. 258, Ruiguang Rd.,  
Neihu Dist., 114, Taipei, Taiwan  
sales@optech.com.tw

## South Korea

Optech Korea Co., Ltd.  
경기도 고양시 덕양구 으뜸로110,  
2동 812호 (힐스테이트에코덕은)  
#812, 102Bldg, 110, Eutteum-ro,  
Deogyang-gu, Goyang-si, Gyeonggi-do,  
Korea, 10543  
jay@optechkorea.com

## Japan

株式会社 エバーリッチジャパン  
130-0004東京都  
墨田区本所1丁目4番  
EVER RICH JAPAN Co., Ltd.  
1 Chome-4-7 Honjo, Sumida City, Tokyo  
130-0004日本  
sales@optech.com.tw

# VAR

## Europe

France  
Microtech Noriak Distribution  
9 rue de la Frebardiere,  
Ecopole Sud Est,  
35510 Cesson Sevigne, France  
sales@optech.com.tw

## Middle East

United Arab Emirates  
Indovision Global FZ LLC  
DMC-BLD05-VD-G00-130, Ground Floor,  
DMC5, Dubai Media City,  
Dubai, UAE  
sales@optech.com.tw

## South Asia

India  
Indovision Services Pvt Ltd  
3rd Floor, Centrum Mall,  
Khasra number 369, MG Road, Sultanpur,  
Near Sultanpur Metro Station,  
New Delhi – 110030  
sales@optech.com.tw

## Africa

South Africa  
Phendula Technologies (Pty) Ltd.  
7 Berkley office park  
8 Bauhinia str,  
Highveld Techno Park,  
Centurion Gauteng, 0157, South Africa  
sales@optech.com.tw



[www.optech.com.tw](http://www.optech.com.tw)